



ABOUT SRUSTYTECHNOLOGIES

Strusty Technologies is most fast-growing IT solutions and services provider and to share the best career advice, and mentor the professionals and students in on the right path. Here's inviting you to participate in any of our courses that are designed to actually benefit you on the job and of the job.

We, Strusty Technologies situated in Nagole, Hyderabad, India, We provide world-class training SAP ERP and Data Analytics Skills.

History

Strusty Technologies established in Nov 2009 by team of dedicated professionals, each one has years of managerial experience, rich industry knowledge and multidimensional skills.

Our Mission & Vision:

To become the largest organization in India for job-oriented training's in various verticals with continuous improvement and produce high levels of professions to global requirements. Strusty firmly believes in "Translating knowledge into skills, followed by practice". Strusty adopts an empirical approach to IT training (Online and class room).

Is it possible to update Free lancing projects Students got placed as consultants & Data Analyst Is in Wipro

- Capgemini
- Accenture
- Cognizant
- Yash Technologies
- Deloitt
- DuPont
- Genpact
- As SAP consultants & Data Analyst
- 10+ years of Real Time Experienced Faculties Associated with Fortune Companies.



Soft copy material will be provided



Everyday class Recordings



Interview preparation & Mock Interviews



Resume Preparation



Project Assistance



THE OVERVIEW OF SAP FICO ONLINE TRAINING:

1. Enterprise Structure.

- Organizational Units.
- Creation of Company, Company Code, Business Area, Functional Area, Credit Control Area.
- FM Area, Consolidated Business Area.
- Assignment of Organizations units.

2. Financial Accounting Basic Settings:

3. Creation of Fiscal Year, Posting period, Field Status. Variant and Field Status

Groups, Document Types and Number ranges, Tolerance Groups, Tax Procedure

4. Currency and ledger settings in HANA

5. New General ledger accounts.

- Chart of Accounts and assignment to company code, changes in HANA.
- Account Groups and screen layout.
- Define Retained Earnings Account.
- General Ledger Master records and Account Types.
- Document Splitting.
- Leading, Extension ledgers, simulation ledgers, and Non-Leading Ledger.
- CO-FI Real-Time Integration changes (HANA changes).

6. Bank Accounts.

- Creation of House Banks .
- Creation of Bank Accounts with NWBC.

- Creation of Check Number Ranges.
- Manual Check creation.
- Issued checks Cancellation.
- Bank Reconciliation.

7. General Ledger Accounting.

- General Ledger Postings ACDOCA table.
- Document display and account display.
- Park Document, Hold Document.
- Sample Document and Recurring Document.
- Month-end Provisions-Accrual/Deferral.
- Documents and Open Item Management.
- Standard Payment, Partial Payment, and Residual items method.
- Define void reason codes.
- Reversal of documents-types of reversals.
- Foreign Currency Exchange rate types creation.
- Foreign Currency translation ratio creation.
- Maintenance of Exchange rates in Forex table.
- Foreign Currency Postings.
- Revaluation of Foreign currency Balances.
- FCV with Simulation ledgers.
- Balance Interests Calculations.
- Cash Journal.

8. Accounts Payables.

- Creation of vendor account groups with Screen Layouts and BP Groups.
- Creation of number ranges for vendor master records and BP settings.
- Assignment of number ranges to vendor account groups.
- Creation of tolerance group for vendors.
- Creation of vendor master and Business Partner.
- Posting of vendor transactions (invoice posting, payment posting, credit memo)





- Partial and Residual Payments Postings.
- Settings for advance payments to parties (down payment) and clearing of down payment against invoices (special GL transactions).
- Outgoing Payment with Clearing.
- Advance Payment Postings.
- Clearing of Advance against Purchases.
- Define Terms of Payment.
- Automatic Payment Program (APP) with Block, Changing House Bank, Special GL, with different Payment Terms.
- Cash Discounts.
- Discount with Installment Payment – Partial and Residual • Discount with Main Terms of Payments and Installment Terms of Payments.
- Credit Memo Postings.
- Open Item Due Date Analysis.
- Vendor Foreign Currency Postings.
- Foreign Vendor Revaluation.

9. Accounts Receivable.

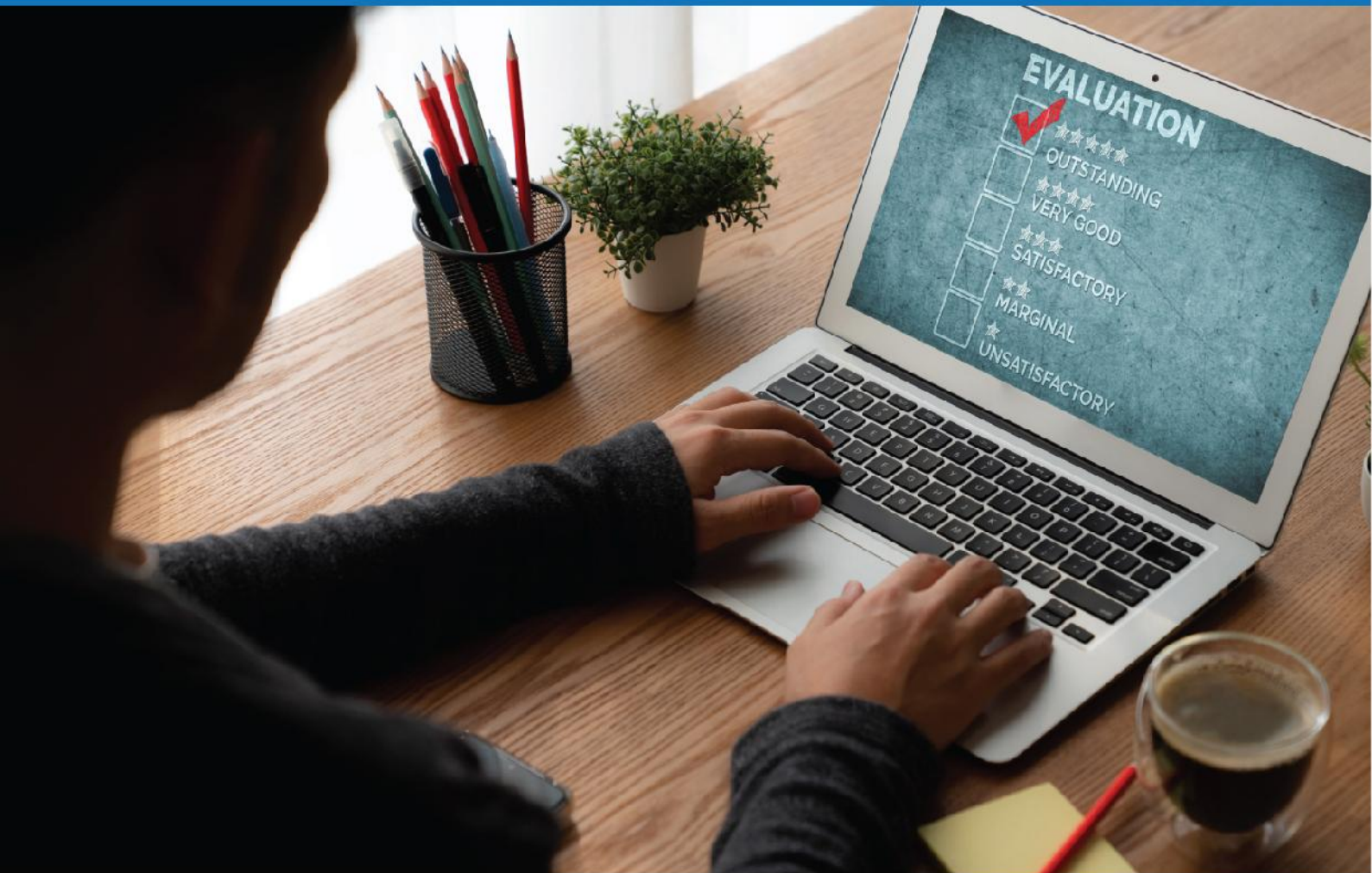
- Creation of customer account groups with Screen Layouts and BP groups.
- Creation of number ranges for customer master records and BP settings.
- Assignment of number ranges for customer account groups.
- Creation of tolerance group for customers.
- Creation of customer master with BP (display/change/block/unblock of vender master).
- Dunning Procedure.
- Execute with Dunning with block.
- Execute with Dunning with Interest.
- Execute with Dunning with Charges.

- Execute with Dunning with Special GL.
- Execute with Dunning with Vendor.
- Bill Discounting Transactions.
- Sales Invoice Posting.
- Display Customer Account Balances.
- Clearing of Transactions where Vendor also is a Customer.
- Incoming Receipt with Clearing.
- Advance Receipt Postings.
- Clearing of Advances against Sales.
- Item Interest Calculation.
- Bad debts.

10. New Asset Accounting.

- Defining chart of depreciation.
- Assignment of the chart of depreciation to company code.
- Dummy ledgers, dep areas for accounting principles.
- Defining account determination.
- Definition of screen layout rules.
- Definition of number ranges for asset classes.
- Integration with General Ledger & Posting rules.
- Defining Depreciation key.
- Definition of multilevel methods.
- Definition of period control methods.
- Creation of main asset master records.
- Creation of sub-asset master records.
- Acquisition of fixed assets with new posting logic.
- Acquisition with Automatic Off-Setting Entry.
- Acquisition within House Production.
- Sale of fixed assets.
- Transfer of assets.





- Scrapping of assets.
- Depreciation run with multiple ledgers and multiple currencies.
- Depreciation with Smoothing.
- Line item Settlement of assets under construction of capital work in progress.
- Asset History Sheet.
- Asset Purchases by MM.
- Internal Order to AUC Settlement.
- Old Asset data transfer.
- Asset revaluation.

11. Reports.

- Financial statement version.
- General Ledger, Accounts Payable, Accounts Receivable, and Assets Reports.

12. FI-MM Integration.

- Definition of organizational units in materials management i.e. plant, storage location, and purchase Organization.
- Assignment of organizational units to each other.
- Definition of tolerance groups for purchase orders.
- Definition of tolerance groups for goods receipt.
- Definition of tolerance groups for invoice verification balance sheet items.
- Definition of vendor-specific tolerances.
- Creation, display, and change of material master records.
- Creation of plant parameters.
- Maintenance of posting periods for materials management.
- Maintenance of parameters for invoice verification.

- Maintenance of plant parameters for inventory management and physical inventory.
- Definition of attributes for material types.
- Assignment of GL accounts for material transactions in financial accounting.
- (Integration of MM with FI).
- ML activation.
- Creation of purchase order, posting of goods receipt, invoice verification and.
- Goods issue for cost center – PO Price differs from Invoice Price -full stock is available.
- Goods issue for cost center – PO Price differs from Invoice Price -stock is not available.
- Goods issue for cost center – PO Price differs from Invoice Price –Partial stock is available.
- Goods issue for cost center – PO Price differs from Invoice Price –Standard Price.
- Asset purchases in MM.

13. FI-SD Integration.

- Definition of the sales organization.
- Definition of distribution channels.
- Definition of divisions.
- Assignment among various organizational units in SD.
- Definition of partner functions.
- Definitions of the shipping point and loading points.
- Definition of pricing procedures.
- Determining the shipping points.
- Determining the pricing procedures.
- Maintenance of SD condition types.
- Maintenance of condition records.
- Assignment of GL accounts for sales transactions(integration of FI with SD).
- Creation of sales order.
- Initialization of stock.
- Posting the delivery of goods.





- Creating the sales order.
- Goods delivered to Customer.
- Billing.
- Cash Received from Customer.

14. Other Topics.

- Year-End Procedure.
- Gl A/Cs Balance Carry Forward.
- Vendor Balance Carry Forward Customer Balance Carry Forward.
- Assets Balance Carry Forward.
- Change Open Item Management.
- Intercompany Transactions.
- Vendor Is Customer Scenario.
- Fiori Apps – Data Entry.
- Data Model in HANA.
- Table changes in HANA.
- Universal Journal.

Controlling:

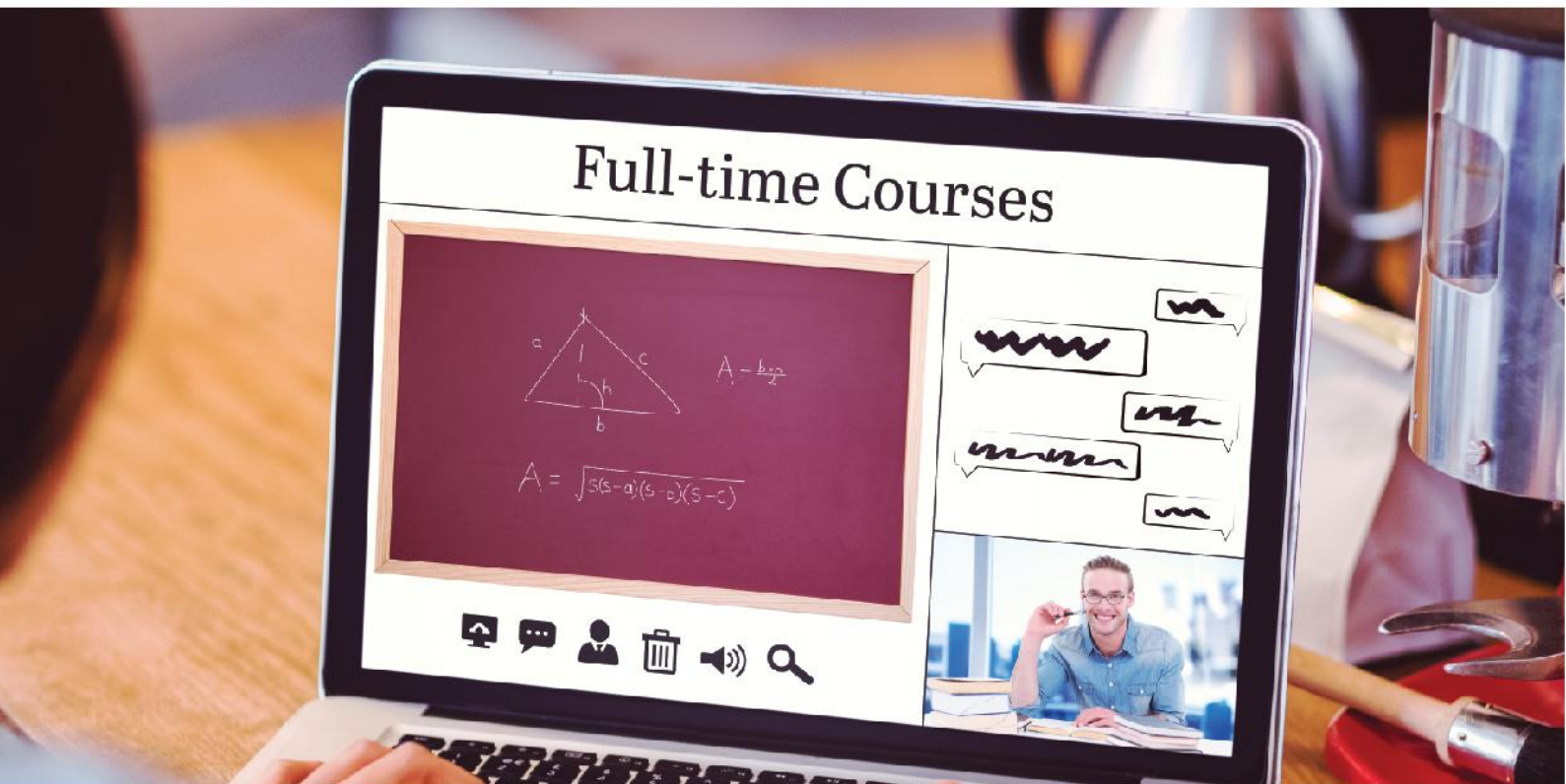
1. Basic Settings for Controlling.

- Maintain Controlling Area.
- Defining Number ranges for Controlling Documents.
- Maintain Planning Versions.
- Cost Element accounting.
- Creation of primary cost elements from the financial accounting area.
- Creation of primary cost elements in controlling area.
- Creation of Secondary Cost Elements in Controlling Area.
- Display/Change of cost element master records.
- Primary cost element categories.

- Secondary cost element categories.
- Creation of primary cost element groups.
- Default account assignments.

2. Cost Center Accounting.

- Defining Cost Center Standard Hierarchy.
- Creation of Cost Centers and cost center groups.
- Display/Change cost center master records.
- Creation of cost center groups.
- Creation of Activity Types.
- Grouping of Activities.
- Creation of SKF.
- Grouping of SKF.
- Posting to cost centers.
- Reposting of co line items.
- Repost of Costs.
- Planning for cost centers – Manual.
- Activity-dependent planning.
- Activity independent planning.
- Activity Output Planning.
- Creation of Own Planner profile.
- Planning for cost centers – Excel upload.
- Overhead Calculation.
- Create Cost Component Splitting Structure.
- Activity Cost Calculation.
- Activity Price Calculation.
- Cost center reports.
- Allocation Methods – Period End Procedure.
- Define Assessment Cycle- Plan and Actual.
- Execute Assessment Cycle- Plan and Actual.





- Define Distribution Cycle – Plan and Actual.
- Execute Distribution Cycle – Plan and Actual.
- Periodic Reposting.
- Indirect activity allocation.
- Allocation Cycle with multiple Segments.
- PP Integration.
- BOM.
- Routing.
- Work Center.
- MRP run.

3.Product Cost Controlling & Planning.

- Introduction to product cost controlling.
- Data Flow in Product costing.
- Areas in Product cost controlling.
- Cost objects.
- Define Cost Sheet.
- Define costing variant.
- Define costing Type.
- Define Valuation variant.
- Define Quantity Structure Control.
- Define Transfer Control.
- Define Date Control.
- Check Costing Variant to Manufacturing Orders (PP).
- Define Goods Received Valuation for Order Delivery.
- Define Main Cost Component Structure.
- Product Cost by Order.
- Work In Process Calculation.
- Define Results Analysis Keys.
- Define Cost Elements for WIP Calculation.

- Define Results Analysis Versions.
- Define Valuation Methods (Actual Costs).
- Define Line IDs.
- Define Assignments.
- Define Update.
- Define Posting Rules for Setting Work in Process.

4. Variance Calculation.

- Define Variance Keys.
- Define Default Variance Keys for Plants Define Target Cost Version.
- Assign Variance Key in Material Master.
- Settlement.
- Create Settlement Profile.
- Create PA Transfer Structure.
- Maintain Number Ranges for Settlement Documents.
- Creation of BOM.
- Create Routing.
- Automatic Account Assignment- integration with MM.
- Standard Cost Estimation.
- Mark and Release.
- Collective Cost estimation.
- Collective Cost estimation.

5. COPA – Controlling Profitability Analysis.

- Account-based COPA.
- Costing based COPA.
- Introduction to profitability analysis.
- Data Flow in profitability Analysis.
- Maintaining the operating concern.
- Assignment of controlling area to operating concern.





- Activating the profitability analysis.
- Define number ranges for actual postings.
- Mapping of SD conditions types to COPA value fields.
- Maintain Characteristics.
- Maintain Value Fields.
- Define Profitability Segment Characteristics.
- Maintain Characteristics Values.
- Define characteristics Derivation.
- Define and Assign Valuation Strategy.
- Define Keys for accessing material cost estimates.
- Assign Costing Keys to any characteristics.
- Assign Value Fields.
- Define Number Ranges for Planning Data.
- Maintain Versions.
- Assign Quantity Fields.
- Define PA Transfer Structure.
- Direct posting from FI/MM.
- Value flow from Cost Center to COPA.
- Value flow From Internal Order to COPA.
- Value Flow from Production Order to COPA.
- COPA Summarization.
- COPA Realignment.
- COPA Derivation Rules.
- COPA Cost Sheet.
- COPA Valuation Strategy.
- Creation Of Forms.
- Creation of reports.
- Execute the reports.

6. Internal Orders.

- Use of Internal order types.
- Settlement profile.
- Planning profile.
- Budget profile.
- Tolerance for budgeting and availability control.
- Order types.
- Real orders and Statistical Orders.
- Creation of secondary cost elements for Internal and External Settlements.
- Planning for internal orders.
- Entering budget information.
- Actual data posting.
- Displaying internal order information.
- Displaying budget control availability.
- Internal Order to AUC settlement.
- AUC to Asset Settlement.
- Internal Order with Investment Management.
- Information Reports.
- Settlement of Real internal orders to cost centers.

7. Profit Center Accounting.

- Basic Settings for Profit Center Accounting.
- Creation of Profit Centers.
- Maintenance of control parameters for actual postings.
- Maintaining planning versions for-profit centers.
- Maintaining the number ranges of for-profit center documents.
- Creation of profit center master records.
- Display of profit center master records.
- Changing the profit center master records.



- Creation of revenue cost elements.
- Automatic Assignment of Revenue elements for Profit Centers.
- Assignment of profit centers in cost center master records.
- Creation of account groups in profit center accounting for planning.
- Planning for profit and loss account items.
- Planning for balance sheet items.
- Posting of transactions into profit centers.
- Generating the variance reports for profit and loss account items.
- Generating the variance reports for balance sheet items.
- Derivation rules creation for revenue elements.
- Derivation rules creation for Balance Sheet accounts.



+91 9391454703, +91 7680922969,
+91 9989708649



srustytechnologies.in



info@srustytechnologies.in

